

CHANGING THE FLOATING PIN HOLDERS IN THE MONO PIN TOOL

MATERIALS INCLUDED:

Figure 1

(Left to Right)

1. Mono Pin Tool Fixture
2. Tube/Pin Holder Removal Probe
3. Tube Holder Adjustment Tool
4. Top Tube Holder
5. FP1 Bottom Pin Holder
6. FP3 Bottom Pin Holder
7. FP4 Bottom Pin Holder

Figure 1

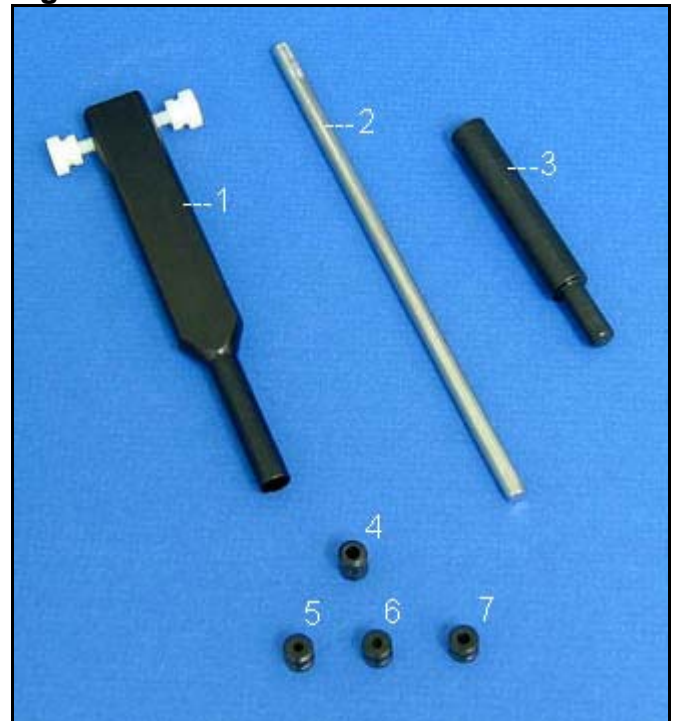


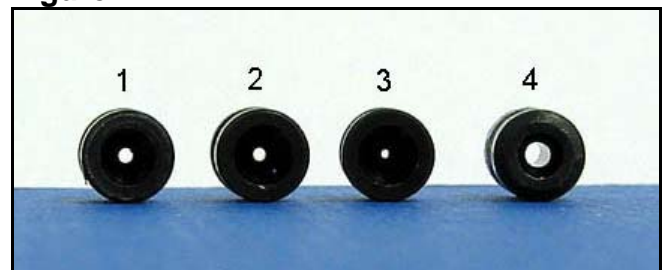
Figure 2

Close-Up of Pin and Tube Holders

(Left to Right)

1. FP4 Bottom Pin Holder
2. FP3 Bottom Pin Holder
3. FP1 Bottom Pin Holder
4. Top Tube Holder

Figure 2



PLEASE NOTE: Each Pin or Tube Holder is flat on one side and countersunk on the other. The side with the countersunk hole is always inserted into the fixture first.

INSERT TOP TUBE HOLDER INSIDE FIXTURE

Figure 3

Push the Tube Holder into the bottom end of the fixture, countersunk end first.

Figure 3



Figures 4 & 5

Press tip of fixture on table top and to push the Tube Holder into the Fixture until flush with the edge of the fixture.



Figure 4



Figure 5

ADJUST TUBE HOLDER TO CORRECT POSITION INSIDE MONO PIN TOOL FIXTURE:

Figure 6

Using the narrow end of the Tube Holder Adjustment Tool, press the Tube Holder further into the shaft of the Mono Pin Tool Fixture with the Tube Holder Adjustment Tool until it cannot move any deeper into the shaft (Figure 7).

Figure 6



Figure 7



NOTE: The Tube Holder Adjustment Tool will place the Tube Holder in the proper position inside the Mono Pin Tool Fixture.

INSERT BOTTOM PIN HOLDER INSIDE FIXTURE



Figure 8
Select the appropriate Bottom Pin Holder (FP1, FP3 or FP4)



Figure 9
Insert the countersunk end of the Pin Holder into the Mono Pin Tool Fixture first.

Push the Pin Holder into the lower end of the Fixture until the groove disappears.

Pin Holder does not need to be even with tip of the Fixture (Figure 10).



Figure 10

LOADING APPROPRIATE PIN INTO MONO PIN TOOL FIXTURE:

Hold pin by the tube end
(Figure 11).

Carefully drop the appropriate pin
into the top of the Fixture.

Lower portion of pin should be
visible at bottom end of fixture
(Figure 12).

Pin should float freely when touched
gently onto solid surface.

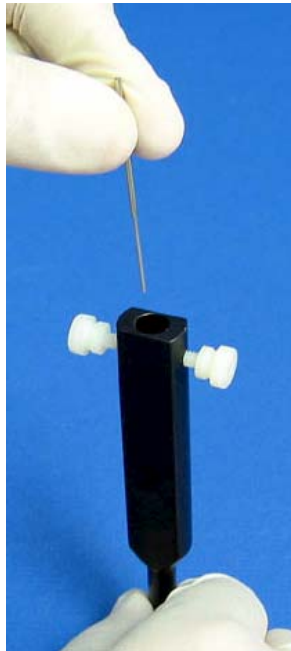


Figure 11



Figure 12

REMOVING PIN AND TUBE HOLDERS TO EXCHANGE PIN HOLDER FOR A DIFFERENT SIZE PIN

Remove Pin from Mono Pin Tool Fixture by
inverting Fixture.

Insert Tube/Pin Holder Removal Probe into
top end of Fixture.

Invert and place removal probe on table
(Figure 13).

Press down on Removal Probe against
Tube and Pin Holders until they slide out of
bottom end of fixture.

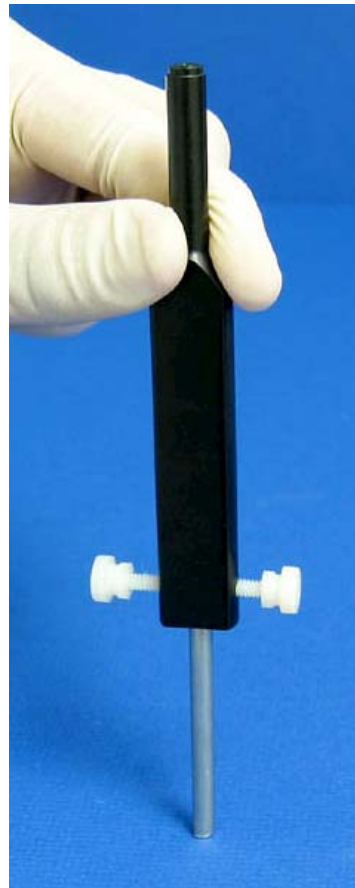


Figure 13