

1 - Overview

- **1.1 - Program Features**
- **1.2 - Program Layout**

2 - Getting Started

- **2.1 - Connecting Device to Computer**
- **2.2 - Software Detection of Device**

3 - Sequence Mode

- **3.1 - Basics**
- **3.2 - Setting Up a Sequence**
- **3.3 - Sequence List**

4 - Scheduled Mode

- **4.1 - Basics**
- **4.2 - Setting Up a Schedule**
- **4.3 - Scheduled List**

5 - Direct Mode

- **5.1 - Basics**
-

Overview - 1.1 Program Features

This software contains three modes of operation:

- **Direct Mode**

Direct control of each of the power outlets separately, allowing for switching on and off at anytime.

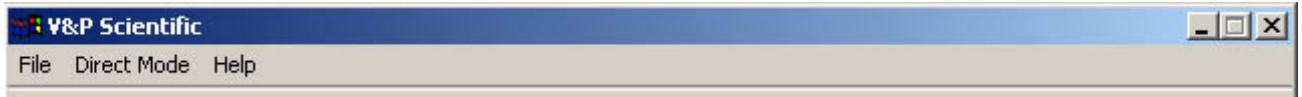
- **Sequence Mode**

Create a sequence of up to 10,000 different timers per outlet. The computer can automatically control the power outlets with either a set number of cycles or an infinite run of the sequence.

- **Scheduled Mode**

Turn the power outlet on or off at a scheduled time.

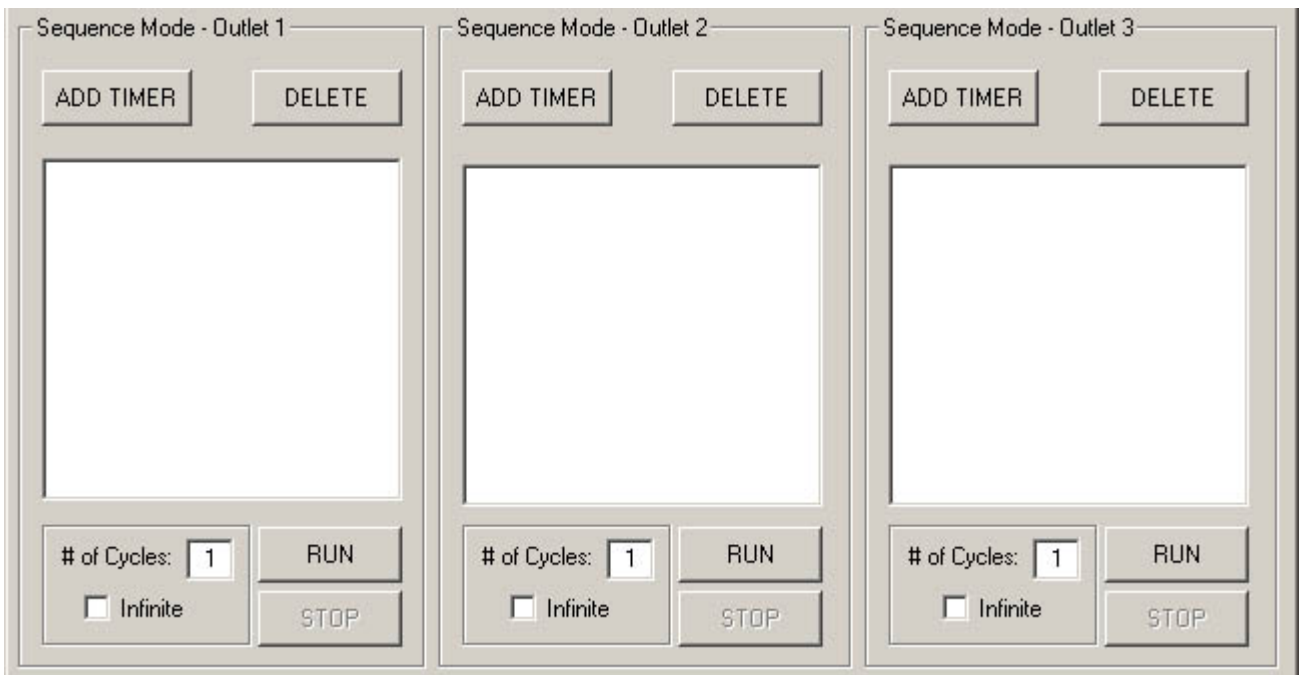
Overview - 1.2 Program Layout



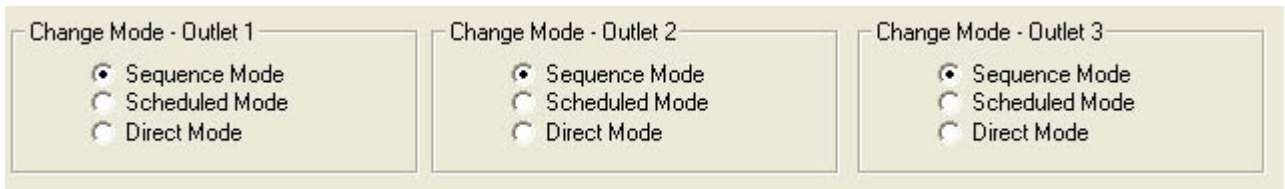
- Allows for setting up com port device is connected to, directly change the current status of one of the power outlets, and access the help area.



- Displays the current status of each of the power outlets, either on or off. When the light is lit the power outlet is currently on and when it's not lit it is off.



- Displays the current mode and it's options for each of the power outlets.



- Allows changing of mode for each of the power outlets.

Getting Started - 2.1 Connecting Device to Computer

Take the RS 232 cord connected to the VP 700 and securely attach it to an open RS 232 port on your computer.

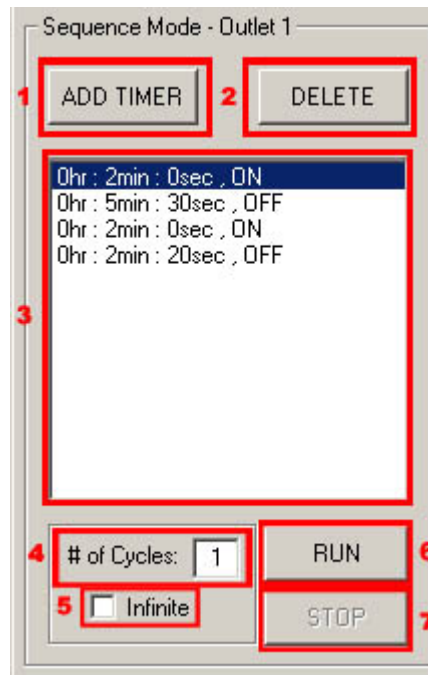
Getting Started - 2.2 Software Detection of Device

Upon executing the program, it will perform an automatic scan of your computers RS 232 ports for the VP 700. In order for the program to automatically detect the VP 700, it must be plugged into an open RS 232 port and turned on.

If auto-detection successfully connects to the VP 700 a messagebox will popup confirming its connection.

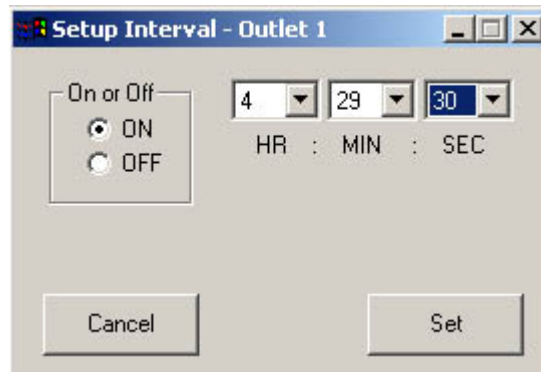
If auto-detection fails to locate and connect to the VP 700 a messagebox will popup prompting to enter the correct com port number the VP 700 is connected to.

Sequence Mode - 3.1 Basics



1. Adds a timer to the sequence.
2. Deletes a selected timer from sequence.
3. Sequence List - shows current sequence with first timer at the top and last at the bottom.
4. Number of cycles the sequence is to run for.
5. Toggle sequence to run for an infinite number of cycles.
6. Start sequence.
7. Stop sequence (active only while sequence is currently running).

Sequence Mode - 3.2 Setting Up a Sequence

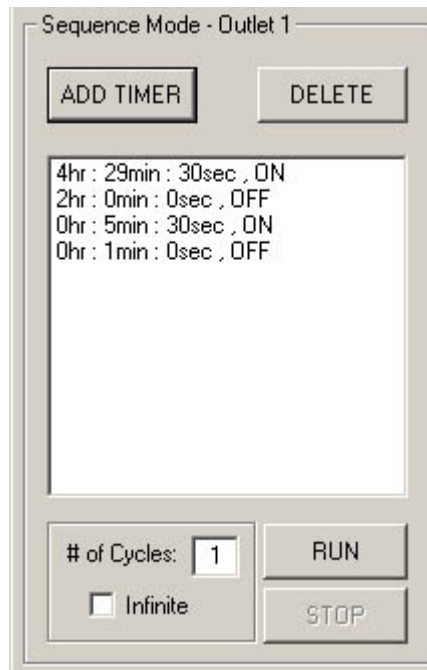


This will set a timer to be on or off for the given length entered.

1. Click the ADD TIMER button. (Box above will appear)
2. Select whether the timer is to be on or off.
3. Select the length of the timer by using the drop down boxes.
4. Click Set to set timer into sequence. (Timer will now appear in sequence list)
5. Repeat steps 1 - 4 for as many timers needed.

Above example timer will be ON for 4hrs 29mins 30sec.

Sequence Mode - 3.3 Sequence List

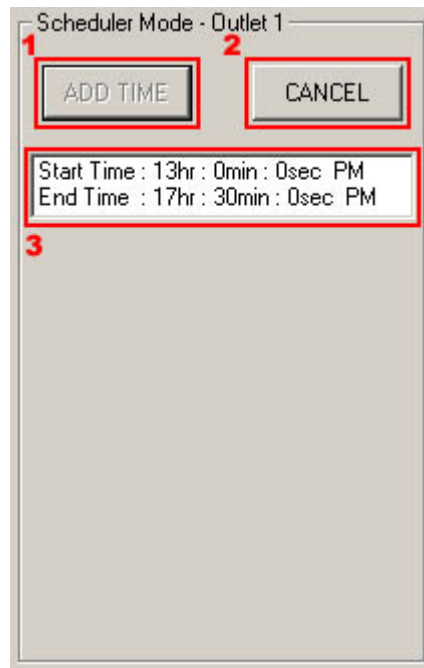


Once all desired timers are correctly added in needed order, you may run the sequence by clicking the RUN button.

The sequence will run in order with the timer at the top to be started first.

You may enter how many cycles the sequence will run for or have it run forever using the # of Cycles and Infinite boxes.

Scheduled Mode - 4.1 Basics



1. Setup scheduled ON and OFF times for outlet.
 2. Cancels current schedule for outlet.
 3. Scheduled List - shows current schedule for outlet. ON Time and OFF time.
-



The screenshot shows a dialog box titled "Setup Time - Outlet 1". It contains two sections for configuring start and end times. The "Start Time" section has a "Start Date" dropdown set to "Today", three time input boxes (HR: 1, MIN: 0, SEC: 0), radio buttons for AM and PM, and a "Start Immediately" checkbox. The "End Time" section has an "End Date" dropdown set to "Today", three time input boxes (HR: 1, MIN: 0, SEC: 0), radio buttons for AM and PM, and an "Indefinite" checkbox. "Cancel" and "Set" buttons are at the bottom.

This will allow for entering start and stop timers for the outlet turn ON and OFF at.

You may enter a Start Time or have the Outlet turn ON immediately and same for End time either set a specific time to turn OFF or set no end time. Times may be entered within a 48 hour period. (Starting from current time to 12:00AM the next day.)

1. Click the ADD TIME button. (Box above will appear)
2. Select a Start Time by using the drop down boxes or check Start Immediately checkbox.
3. Select a End Time by using the drop down boxes or check Indefinite checkbox.
4. Click Set button to set schedule. (Times will now appear in scheduler list)

Scheduled Mode - 4.3 Scheduled List



Scheduled Mode - Outlet 1

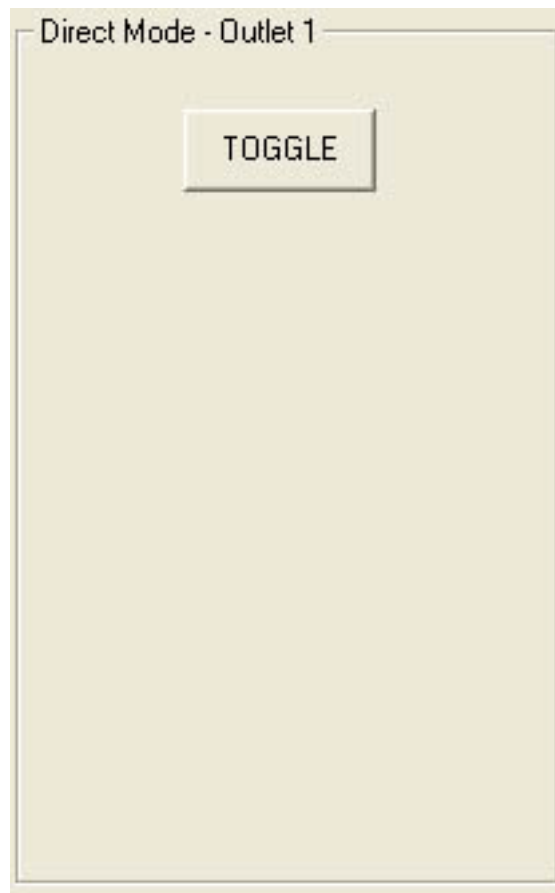
ADD TIME CANCEL

Start Time : 14hr : 0min : 0sec PM
End Time : 17hr : 35min : 0sec PM

Once desired Start and End times are entered they will show up in the list box. Times are shown in a 48 hour representation. (Above schedule is set to turn Outlet 1 ON at 2:00PM and turn OFF at 5:00PM the same day.)

You may cancel the schedule at anytime by clicking the CANCEL button.

Direct Mode - 5.1 Basics



Direct Mode allows for direct control over each outlet. You may turn outlets ON and OFF at anytime. This can be done either by selecting direct mode in the Change Mode Section and pressing the Toggle button or by going to the drop down menu, "Change State of Outlets" and selecting the desired outlet, as demonstrated above.